

The background of the slide features a close-up photograph of a person's hand holding a small, vibrant green leaf. The hand is positioned at the bottom center, with fingers gently cupping the leaf. A bright, ethereal blue light beam originates from behind the leaf and extends upwards towards the top center of the frame. The background is a deep blue, overlaid with large, sweeping, curved bands of magenta and purple, creating a sense of dynamic movement and depth.

ACTING TOGETHER IN A WORLD OUT OF BALANCE

Christin Schönleber

Senior Director (Policy & Programs), APRU

Day II , July 23, 2020

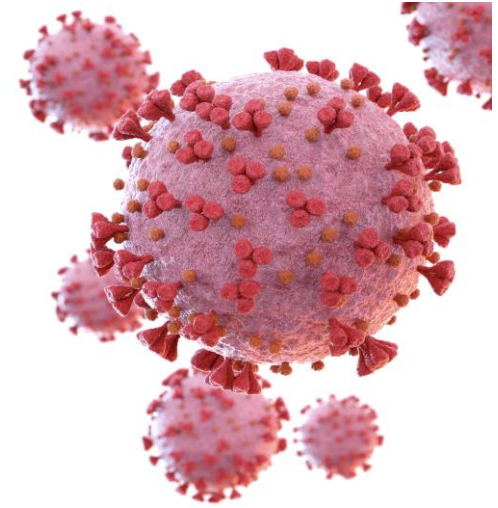
A World out of Balance



“...more than half the carbon exhaled into the atmosphere by the burning of fossil fuels has been emitted in just the past three decades.”



Global Population is expected to exceed 9 billion in less than 30 years, tripling in just three generations



The world as we know it has been upended. We are living in an unpredictable new world



We bring together thought leaders, researchers, and policy-makers to exchange ideas and collaborate on effective solutions to the challenges of the 21st century.

APRU Members

- Australia**
 Australian National University
 Monash University
 The University of Melbourne
 The University of Queensland
 The University of Sydney
 UNSW Sydney
- Canada**
 The University of British Columbia
- Chile**
 University of Chile
- China & Hong Kong SAR**
 Fudan University
 Nanjing University
 Peking University
 Shanghai Jiao Tong University
 The Chinese University of Hong Kong
 The Hong Kong University of Science and Technology
 The University of Hong Kong
 Tsinghua University
 University of Science and Technology of China
 University of Chinese Academy of Sciences
 Xi'an Jiaotong University
 Zhejiang University

- Chinese Taipei**
 National Taiwan University
 National Tsing Hua University

- Colombia**
 Universidad de los Andes

- Ecuador**
 Universidad San Francisco de Quito

- Indonesia**
 University of Indonesia

- Japan**
 Keio University
 Nagoya University
 Osaka University
 Tohoku University
 Waseda University

- Korea**
 Korea University
 KAIST
 POSTECH
 Seoul National University
 Yonsei University

- Malaysia**
 University of Malaya

- Mexico**
 Tecnológico de Monterrey

- New Zealand**
 University of Auckland

- Philippines**
 University of the Philippines

- Russia**
 Far Eastern Federal University

- Singapore**
 Nanyang Technological University
 National University of Singapore

- Thailand**
 Chulalongkorn University

- USA**
 California Institute of Technology
 University of California, Berkeley
 University of California, Davis
 University of California, Los Angeles
 University of California, Riverside
 University of California, San Diego
 University of California, Santa Barbara
 University of California, Santa Cruz
 University of Hawai'i at Mānoa
 University of Oregon
 University of Southern California
 University of Washington

Strategic Priorities

01

**Building
impact**

02

**Creating high-
value
partnerships**

03

**Increasing
APRU's value to
members**

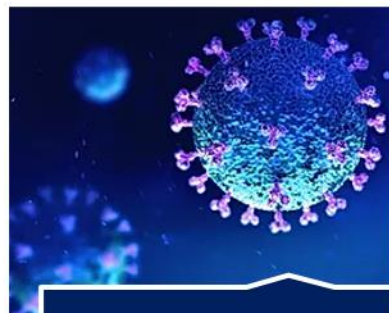
Solving Asia-Pacific Challenges



**Asia-Pacific Women
in Leadership**



Digital Economy



Global Health



Multi-Hazards



Pacific Ocean



Population Aging



**Sustainable Cities &
Landscapes**



**Sustainable Waste
Management**

APRU Program Hubs

Global
Health



Multi-
Hazards



Population
Aging



Sustainable
Cities &
Landscapes



Sustainable
Waste
Management



APRU PARTNERS



The New York Times



ELSEVIER

The
Wiley
Network



Asian Development Bank



APRU Multi-Hazards Program

- Capacity Building
Progress in Disaster Science:
New Multi-Hazards Journal
- Education for Resilience
MH Summer School
MH Campus Safety Workshop
- Impact & Advocacy
30 Innovation for Disaster Risk Reduction
2nd Edition



Multi-hazards approach and COVID19: Flattening the curve and early recovery lessons

Panelists:

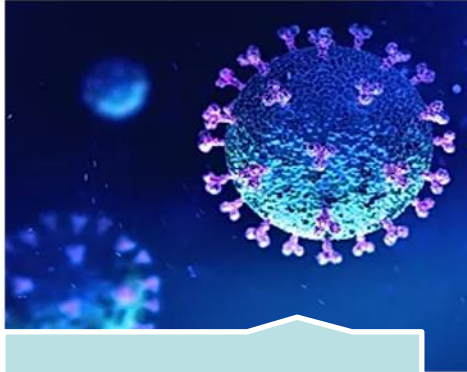
- Chris Tremewan, APRU
- Loretta Hieber Giradet, UN Office for DRR
- Yong-Kyun Kim, Ministry of Interior and Safety, South Korea
- Antonia Yulo Loyzaga, National Resilience Council Philippines
- Takako Izumi, Tohoku University

Moderator: Rajib Shaw, Keio University

In collaboration with:



APRU.org



Resources



Programs



Higher
Education



Students



Download the Full Report at www.apru.org/resources/



Thank you.