



What is Campus Safety?

Amy B. Aiken, Director

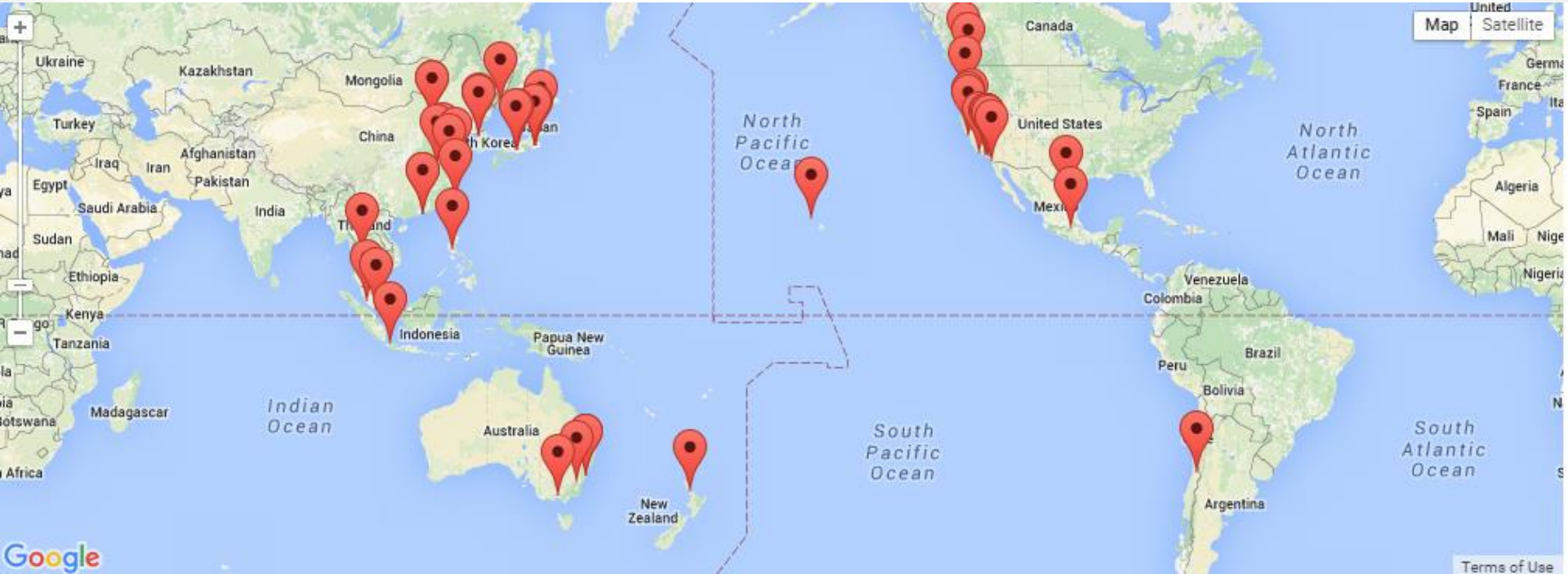
Department of Emergency Management

Florida International University, Miami, Florida, USA

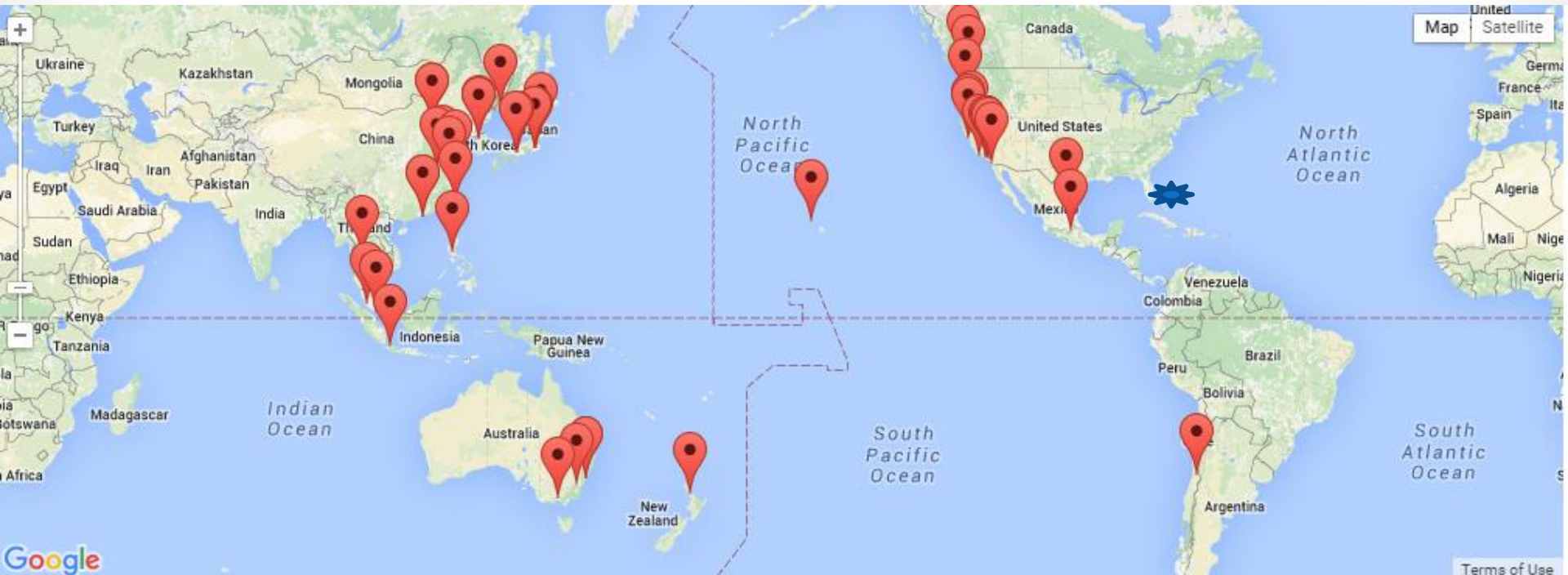


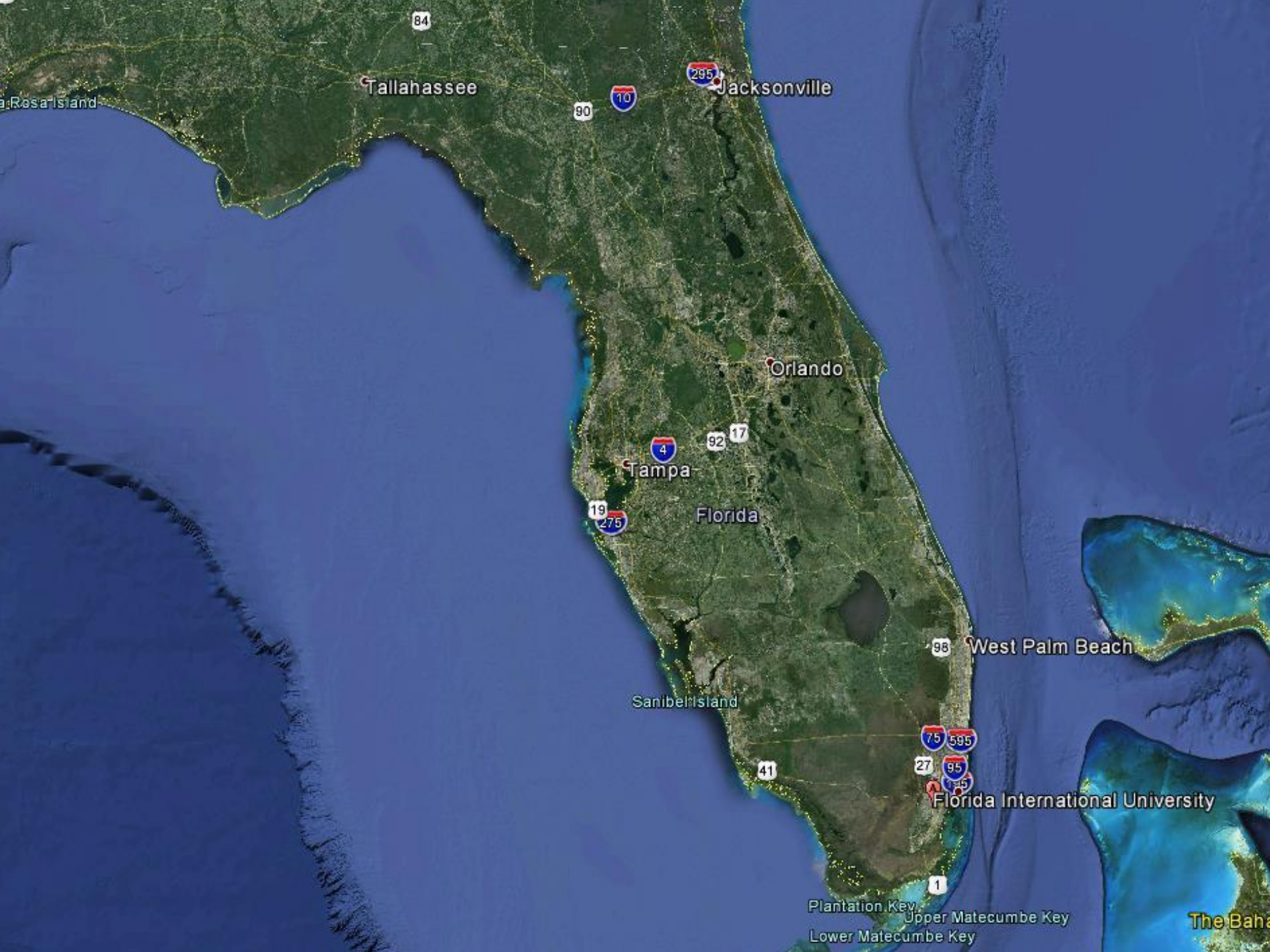
APRU

Association of Pacific Rim Universities



FIU | FLORIDA INTERNATIONAL UNIVERSITY





Tallahassee

Jacksonville

Orlando

Tampa

Florida

West Palm Beach

Florida International University

Plantation Key
Upper Matecumbe Key
Lower Matecumbe Key

The Bahamas







The Wolfsonian



Frost Art Museum



Jewish Museum

中国天津商业大学

美国佛罗里达国际大学合作学院

Tianjin University of Commerce

Florida International University Cooperative School



FIU

FLORIDA
INTERNATIONAL
UNIVERSITY

TUC

TIANJIN
UNIVERSITY OF
COMMERCE

FIU

FLORIDA
INTERNATIONAL
UNIVERSITY

TUC

Rankings & Facts



[Home](#) » [About Us](#) » [Rankings & Facts](#)

55,000

Number of students attending FIU in Fall 2015

1

in nation in awarding bachelor's and master's degrees to Hispanic students

17

Washington Monthly ranks FIU 17th among the top universities in the country.

6

among international business programs in the nation.

10

among the 10 largest public universities in the United States



ABOUT US

[Administration](#)

[Campuses](#)

[Contact Us](#)

[Employment](#)

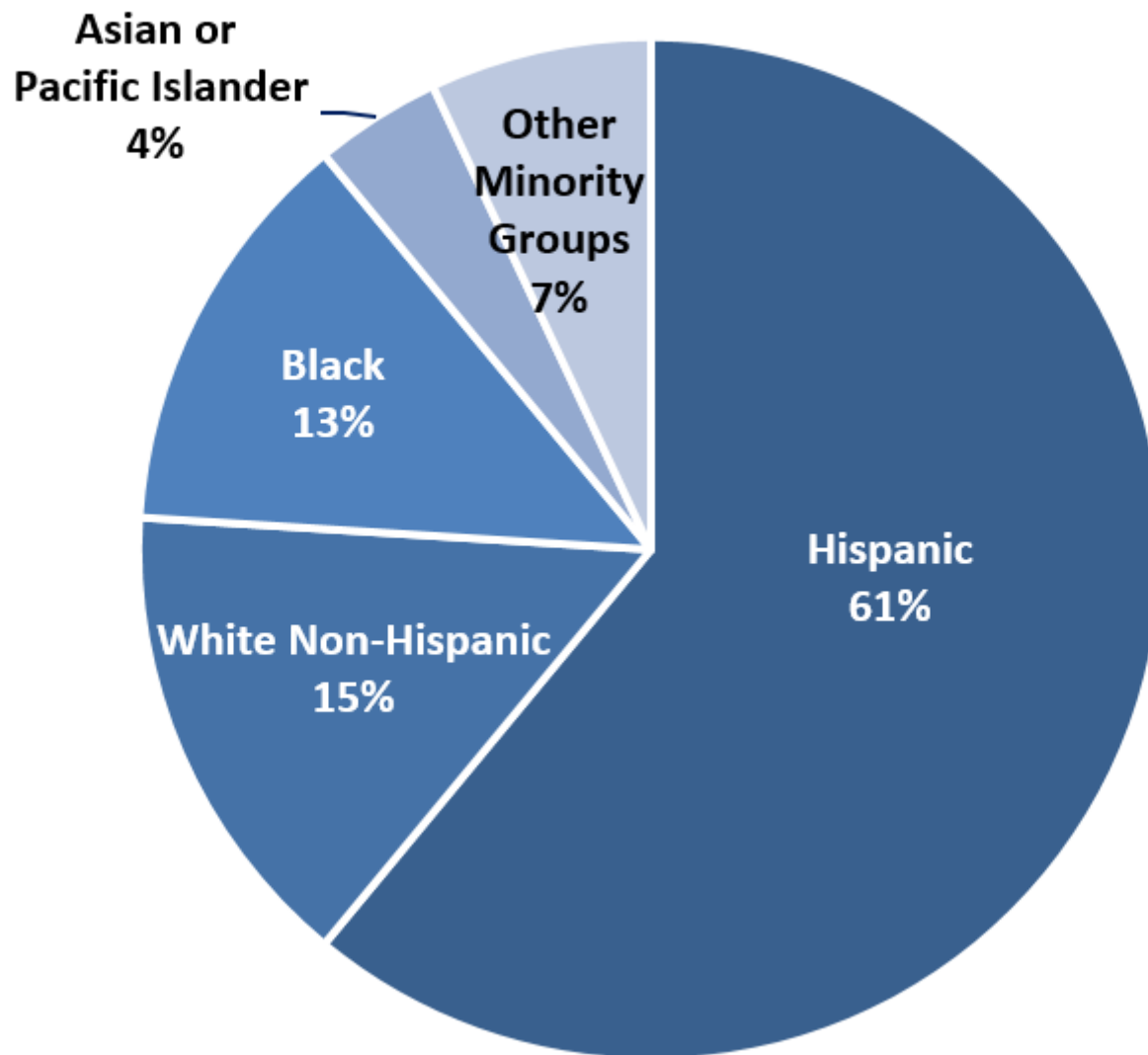
[History](#)

[Rankings & Facts](#)

[Student Consumer Information](#)

[Vision and Mission](#)

FIU'S STUDENT POPULATION



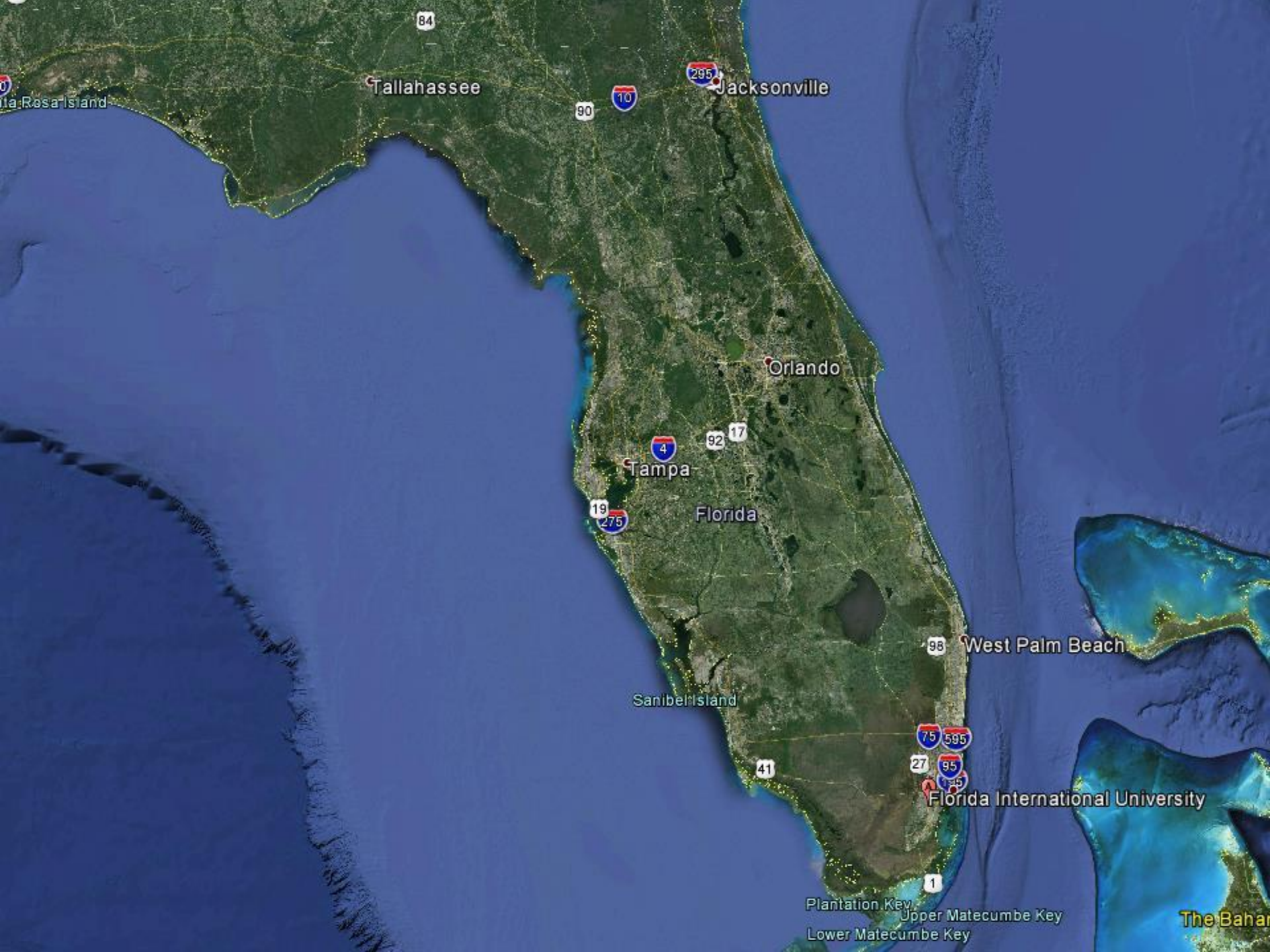






Parking Lot





Tallahassee

Jacksonville

Orlando

Tampa

Florida

West Palm Beach

Sanibel Island

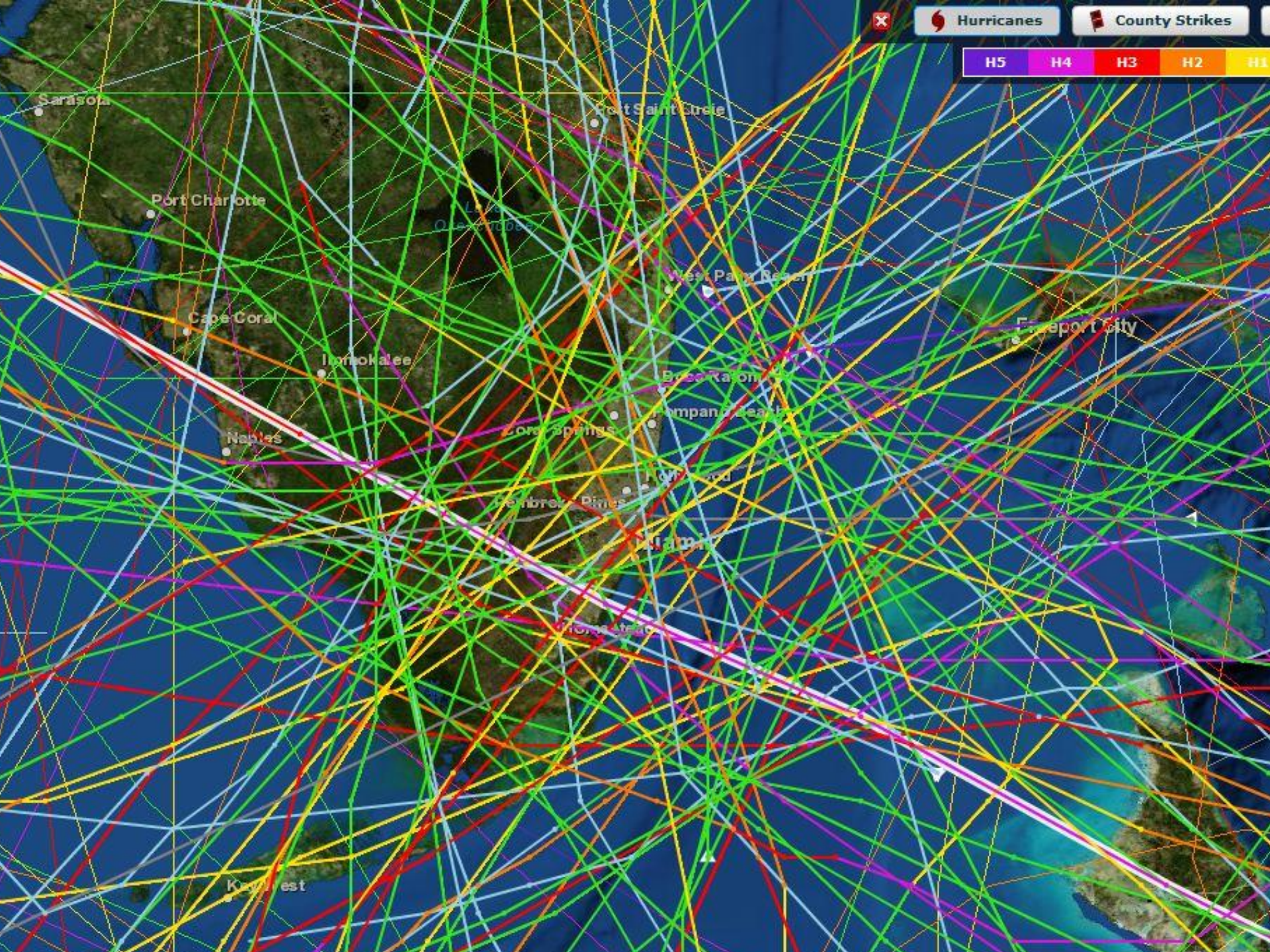
Florida International University

Plantation Key

Upper Matecumbe Key

Lower Matecumbe Key

The Bahamas





Hurricane Andrew

NOAA-12 AVHRR HRPT

Multi-spectral False Color Image

August 23, 1992 @ 12:31 UTC



MAP SNAPSHOT: 2014 ASIA-PACIFIC NATURAL DISASTERS













2014 Fact Snapshot: Natural Disasters in Asia and the Pacific



US\$59.6 BILLION

total cost of economic losses



79.6 MILLION PEOPLE

were affected by natural disasters



119 DISASTER EVENTS

were recorded in the Asia-Pacific region



6,050 PEOPLE

lost their lives due to natural disasters



45+ MILLION PEOPLE

were affected by floods and storms



TROPICAL CYLONES

Hudhud, Lingling, Kajiki and Hagupit caused US\$16.3 billion in economic losses



FLOODS

resulted in the most fatalities (3,559) & the highest economic losses (US\$26.8 billion)



LANDSLIDES

resulted in 657 fatalities & affected approximately 177,781 people

Source: United Nations
Economic and Social Commission for Asia and the Pacific
2014 Year in Review

The background of the image is a dense, microscopic view of various pathogens. It features numerous spherical viruses with prominent surface spikes, resembling coronaviruses, and several rod-shaped bacteria with flagella. The entire scene is rendered in a monochromatic green color scheme against a black background, creating a high-contrast, scientific aesthetic.

Pandemic





AREAS IN NEED OF URGENT ATTENTION



Strengthening existing regional cooperation for cyclone/typhoon early warning



Establishing regional cooperation mechanisms for transboundary floods and landslides



Utilizing innovative technologies for disaster assessment



Communicating the risk of slow-onset disasters through scientific analyses, early warning and impact outlooks

Source: United Nations
Economic and Social Commission for Asia and the Pacific
2014 Year in Review

What is Campus Safety?



MITIGATION

Public Education
Hazard & Vulnerability Assessment
Improved Infrastructure

PREPAREDNESS

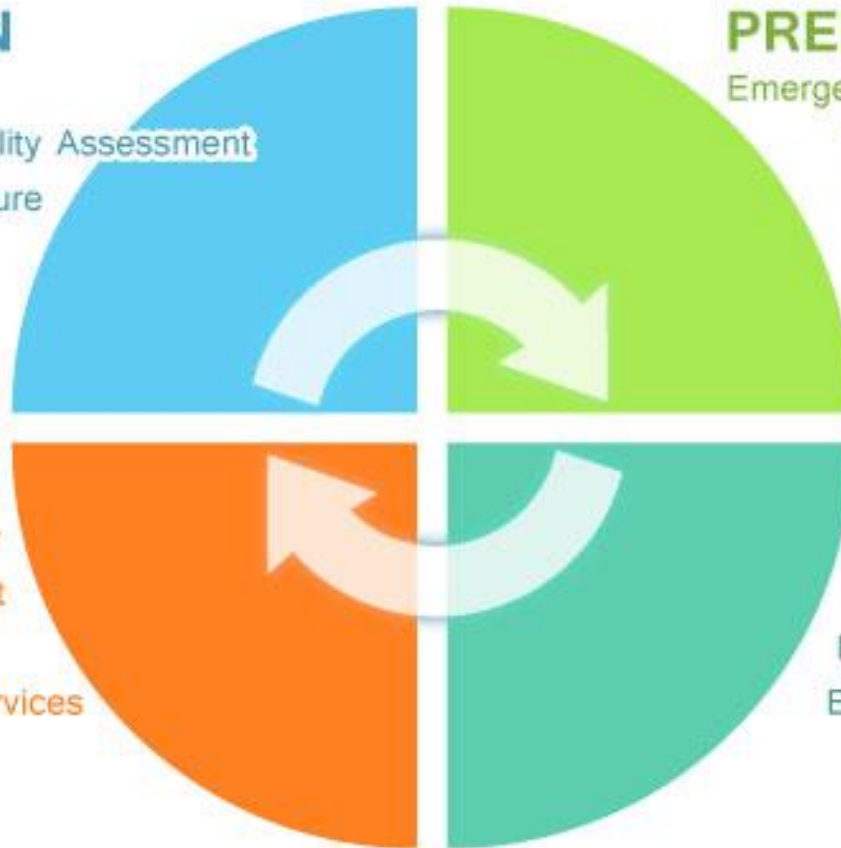
Emergency Response Plans
Training & Exercises
Sirens

RECOVERY

Economic Recovery
Debris Management
Housing
Health & Social Services

RESPONSE

Life Safety
Incident Stabilization
Property Preservation
Evacuation & Shelters
Mass Care



Emergency Management

- Strategic, not tactical
- Ideally resides in executive level of organization
- No direct power
- Often comes “after the fact”

Effective Disaster Management Program

- Leadership
- Legal Authorities
- Adequate Funding
- Emergency Operations Center
- Appropriate Staffing
- Training/Exercises
- Mutual Aid/Partnerships



FIU

Emergency
Operations
Center







69 MY
TECHNICAL
SUPPORT

11:53 81°



cbsmiami.com





What is an EOC?

- A physical location
- Staffed with personnel trained and authorized to represent their agency/discipline
- Equipped with technology for transmitting and receiving information
- Managed through protocols



FINANCE

PLANNING

LOGISTICS

OPERATIONS

FIU
Florida International University

Are You Ready?

100



What is an EOC?

- A physical location
- Staffed with personnel trained and authorized to represent their agency/discipline
- Equipped with technology for transmitting and receiving information
- Managed through protocols



NATIONAL INCIDENT MANAGEMENT SYSTEM

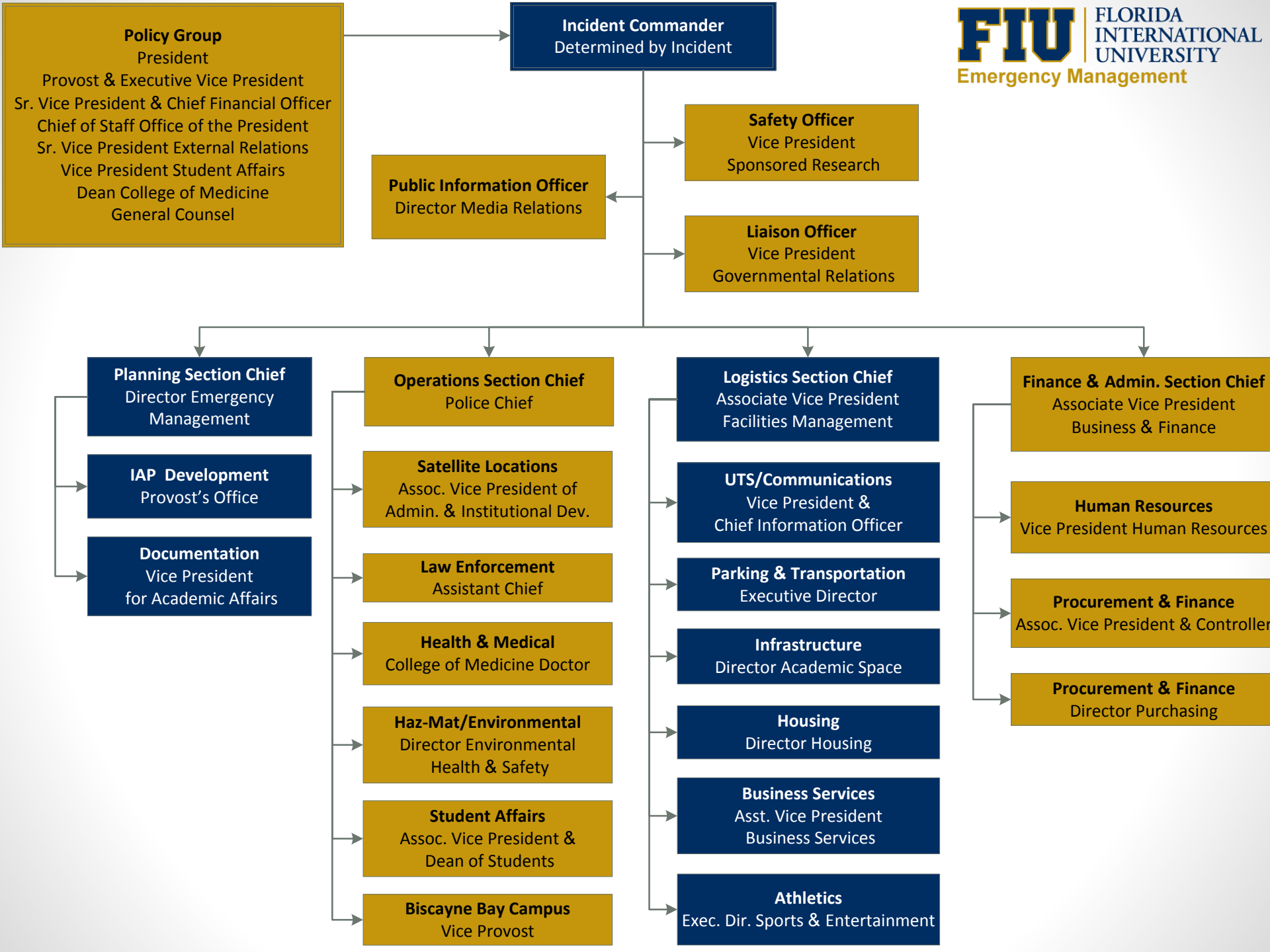
December 2008



Homeland
Security

Incident Command System

- **Standardized** management tool
- Relies on a tight chain of command
- Flexible – expand or contract
- Promotes effective, **team-based** decisions and incident response





FINANCE

PLANNING

LOGISTICS

OPERATIONS

FIU
Florida International University

Are You Ready?

100







Effective Disaster Management Program

- Leadership
- Legal Authorities
- Adequate Funding
- Emergency Operations Center
- Appropriate Staffing
- Training/Exercises
- Mutual Aid/Partnerships

FIU

**Emergency
Operations
Center**



Culture of Preparedness

Plan

Train

Exercise

- Tornado
- Pandemic
- Hurricane 2011, 2012, 2013, 2014, 2015
- Active Shooter
- Cyber Attack
- Bomb Threat
- Chemical Spill
- Foodborne Illness
- Mass Gathering
- Infectious Disease/Ebola
- EM Review

